



**YARD
TRAINER**

::300

OPERATING AND BASIC TRAINING GUIDE
PLEASE READ THIS ENTIRE GUIDE BEFORE BEGINNING

Hereinafter Radio Systems Corporation, Radio Systems PetSafe Europe Ltd., Radio Systems Australia Pty Ltd. and any other affiliate or Brand of Radio Systems Corporation may be referred to collectively as "We" or "Us".

Thank you for choosing SportDOG® Brand training products. Used properly, this product will help you train your dog efficiently and safely. To ensure your satisfaction, please review this owner's manual thoroughly. If you have questions regarding this product's operation, please see this manual's Frequently Asked Questions or Troubleshooting sections, contact our Customer Care Center at 1-800-732-0144, visit our website at www.sportdog.com, or view our support videos at www.youtube.com/sportdogbrand.

To get the most protection out of your One Year Warranty, please register your product within 30 days at www.sportdog.com. By registering and keeping your receipt you will enjoy the product's full warranty and, should you ever need to call the Customer Care Center, we will be able to help you faster. Most importantly, your valuable information will never be given or sold to anyone. Complete warranty information is available online at www.sportdog.com.

OTHER IMPORTANT INFORMATION

Use of this product implies acceptance of any and all terms, conditions, and notices related to this product including, but not limited to, those found in this Operating Guide and the Insert containing important Regulatory Compliance and Safety information.

TABLE OF CONTENTS

COMPONENTS.....	3
HOW THE SYSTEM WORKS	3
ACCESSORIES	3
KEY DEFINITIONS	4
PREPARE THE REMOTE TRANSMITTER	5
PREPARE THE COLLAR RECEIVER.....	6
FIT THE COLLAR RECEIVER.....	8
FIND THE BEST INTENSITY LEVEL FOR YOUR DOG.....	8
CHANGING STATIC STIMULATION RANGES.....	9
MATCH THE COLLAR RECEIVER AND REMOTE TRANSMITTER	10
BASIC TRAINING WITH PRO TRAINER CHARLIE JURNEY	10
FREQUENTLY ASKED QUESTIONS.....	18
TROUBLESHOOTING.....	19
TEST LIGHT INSTRUCTIONS	20
COMPLIANCE.....	20
BATTERY	21

You Tube videos available at www.youtube.com/sportdogbrand or on each products' VIDEOS tab at sportdog.com.

COMPONENTS

THE YARDTRAINER 300 CONTAINS:

- Remote Transmitter
- Collar Receiver
- Charge Cable
- Long Contact Points
- Lanyard
- Test Light Tool



HOW THE SYSTEM WORKS

The SportDOG® Brand YardTrainer 300 has been proven safe, comfortable, and effective for dogs over 8 pounds. Consistent, correct use of this product allows you to reinforce commands and correct misbehavior from up to 300 yards. The Remote Transmitter sends a signal, activating the Collar Receiver to deliver a harmless stimulation. With proper training, a dog will learn to associate this signal with a command. Like all SportDOG Brand products, this model features adjustable static stimulation levels so you can tailor the static stimulation level to your dog's temperament, eliminating the risk of over-correction.

IMPORTANT: THE YARDTRAINER 300 HAS A RANGE UP TO 300 YARDS. DEPENDING ON THE WAY YOU HOLD THE REMOTE TRANSMITTER, THE MAXIMUM RANGE MAY VARY. FOR CONSISTENT RESULTS AT LONGER RANGES, HOLD THE REMOTE TRANSMITTER IN A VERTICAL POSITION AWAY FROM YOUR BODY AND OVER YOUR HEAD. TERRAIN, WEATHER, VEGETATION, TRANSMISSION FROM OTHER RADIO DEVICES, AND OTHER FACTORS WILL AFFECT THE MAXIMUM RANGE.

ACCESSORIES

To purchase additional accessories for your SportDOG Brand product visit our website at www.sportdog.com or contact the Customer Care Center at 1-800-732-0144.

KEY DEFINITIONS



REMOTE TRANSMITTER: Transmits the radio signal to the Collar Receiver. It is waterproof and can be submerged in water to a depth of 25 feet.

INTENSITY DIAL: Provides multiple levels of static stimulation so you can match the correction to your dog's temperament.

TRANSMITTER INDICATOR LIGHT: Indicates that a button is pressed and also serves as a low battery indicator.

UPPER BUTTON: This button is factory-set to deliver continuous static stimulation, or vibration stimulation if Intensity Dial is set to V/T.

LOWER BUTTON: This button is factory-set to deliver momentary static stimulation, or vibration stimulation if Intensity Dial is set to V/T.

SIDE BUTTON: This button is factory-set to deliver a tone without static stimulation.

CHARGING JACK: For connecting the charger. Although the Remote Transmitter is waterproof without it, keep the cover in place when not charging to keep debris out of the opening.

COLLAR RECEIVER: Receives the radio signal from the Remote Transmitter and delivers the static, vibration, or tone stimulation for correcting or cueing your dog. It is waterproof and can be submerged in water to a depth of 25 feet.

RECEIVER INDICATOR LIGHT: Indicates when the Collar Receiver has been turned on or off, serves as a low-battery indicator, and also indicates when a continuous or momentary static stimulation button is pressed.

CONTACT POINTS: The contacts through which the Collar Receiver delivers static stimulation.

ON/OFF BUTTON: Momentarily pressing and releasing this button turns the Collar Receiver on and off.

THE COLLAR RECEIVER IS CAPABLE OF DELIVERING FOUR TYPES OF STIMULATION:

CONTINUOUS: You control both when and how long static stimulation is delivered, up to a maximum of 10 seconds. After 10 seconds the stimulation will "time out" and the Transmitter button needs to be released and then pressed again before additional stimulation can be delivered.

MOMENTARY (NICK): Static stimulation is delivered for 1/10 of a second, regardless of how long the button is pressed.

TONE: The Collar Receiver will make a rapid beeping noise when a Tone button is pressed.*

VIBRATION: The Collar Receiver will vibrate when a Vibration button is pressed, up to a maximum of 10 seconds.*

**Tone and Vibration come preset and are not adjustable.*

STEP::01

PREPARE THE REMOTE TRANSMITTER

Before using the YardTrainer 300 for the first time, be sure to charge the unit by following the steps described in pages 5-6.

Your YardTrainer contains a rechargeable battery pack. When the unit indicates the battery is low (red light indicator) it is time to recharge the unit.

CHARGE THE REMOTE TRANSMITTER

1. Lift the rubber cover protecting the Charging Jack.
2. Connect the corresponding charge connector to the Charging Jack.
3. Plug the USB Adaptor into a power source.
4. Charge the Remote Transmitter for 2 hours for the first charge and every charge thereafter.
5. When charging is complete, replace the rubber cover.

Using Li-Ion technology, the Remote Transmitter only requires a 2 hour charge. It is not harmful to let the unit charge for more than 2 hours.

NOTE: Approximate battery life between charges is 50 to 70 hours, depending on frequency of use.



CHARGE
CONNECTOR
PLACED IN
THE REMOTE
TRANSMITTER
CHARGING JACK

TRANSMITTER INDICATOR LIGHT

OPERATIONAL MODE	LIGHT COLOR	BATTERY STATUS	LIGHT FUNCTION
Continuous static, tone, or vibration stimulation button pressed	Green	Good	Solid in color while button is pressed
	Red	Low	
Momentary static stimulation button pressed	Green	Good	Flashes once and turns off
	Red	Low	
Unit is charging	Green	Low	Solid in color while on the charger
Unit is fully charged (charger still connected)	Green	Good	Flashes once per second once the battery is completely charged

STEP::02

PREPARE THE COLLAR RECEIVER

CHARGE THE COLLAR RECEIVER

1. Lift the rubber cover protecting the Charging Jack.
2. Connect one of the charge connectors to the Charging Jack.
3. Plug the USB Adapter into a power source.
4. Charge the Collar Receiver for 2 hours during the first charge, and every charge thereafter. Remove the charge connector once charged and secure the rubber cover fully to ensure debris does not enter the Charging Jack.

Using Li-Ion technology, the Collar Receiver only requires a 2 hour charge. It is not harmful to let the unit charge for more than 2 hours.

TO TURN THE COLLAR RECEIVER ON

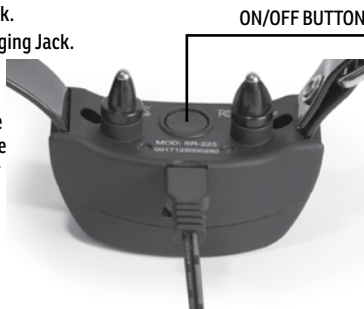
Press and release the On/Off Button. The Collar Receiver Indicator Light will come on and the Collar Receiver will beep 1-2 times depending on what stimulation range is chosen (page 9). The default is 2 (medium).

TO TURN THE COLLAR RECEIVER OFF

Press and release the On/Off Button when the Receiver Indicator Light comes on solid red and the Collar Receiver beeps for 2 seconds.

To extend the life between charging cycles, turn the Collar Receiver off when it is not in use.

NOTE: Approximate battery life between charges is 50-70 hours, depending on frequency of use.



RECEIVER INDICATOR LIGHT

OPERATIONAL MODE	LIGHT COLOR	BATTERY STATUS	LIGHT FUNCTION	SPEAKER FUNCTION	VIBRATION
Unit is turned on via On/Off Button	Green	Good	Light is solid in color during beep sequence	Beeps 1-2 times depending on static stimulation range setting (2 is the default setting), see page 9	N/A
	Red	Low			
Unit is turned off via On/Off Button	Red	N/A	Light is solid in color during beep sequence	Beeps continuously for 2 seconds	N/A
Unit is on	Green	Good	Light flashes every 2 seconds	N/A	N/A
	Red	Low			
Unit is delivering continuous static stimulation	Red	N/A	Light is solid in color for as long as button is pressed (up to 10 seconds)	N/A	N/A
Unit is delivering momentary static stimulation	Red	N/A	Light will quickly flash once, no matter how long the button is pressed	N/A	N/A
Unit is delivering tone stimulation	Off	N/A	N/A	Unit will beep for as long as button is pressed	N/A
Unit is delivering vibration stimulation	Off	N/A	N/A	N/A	Unit will vibrate for as long as button is pressed (up to 10 seconds)
Unit is charging	Green	Low	Light is solid in color while charging	N/A	N/A
Unit is fully charged (charger still connected)	Green	Good	Light flashes once per second once the battery is completely charged	N/A	N/A

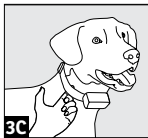
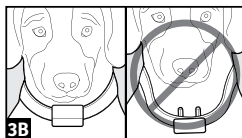
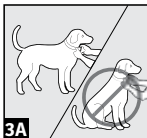
STEP::03

FIT THE COLLAR RECEIVER

IMPORTANT: THE PROPER FIT AND PLACEMENT OF THE COLLAR RECEIVER IS IMPORTANT FOR EFFECTIVE TRAINING. THE CONTACT POINTS MUST HAVE DIRECT CONTACT WITH YOUR DOG'S SKIN.

To ensure a proper fit, follow these steps:

1. With your dog standing (3A), center the Collar Receiver so the Contact Points are underneath your dog's neck, touching the skin (3B). If your dog has a long or thick coat, you have two options to ensure consistent contact: either trim the hair around the Contact Points or switch to the longer Contact Points included with your system.
2. The Collar Receiver should fit snugly, yet loose enough to allow one finger to fit between the strap and your dog's neck (3C).
3. Allow your dog to wear the collar for several minutes, and then recheck the fit. Check the fit again as your dog becomes more comfortable wearing the Collar Receiver. You should avoid leaving the collar on your dog for more than 12 hours per day.



STEP::04

FIND THE BEST INTENSITY LEVEL FOR YOUR DOG

Your SportDOG® Brand system has multiple intensity levels. This allows you to choose the static stimulation level that is best for your dog. For training efficiency, it is important to find the right intensity level for your dog. This is called the Recognition Level, at which your dog looks around in curiosity, or flicks his ears.

NOTE: Always start at the lowest level and work your way up.

FINDING YOUR DOG'S RECOGNITION LEVEL:

NOTE: Every dog is different and you cannot predict where your dog's Recognition Level will be. Watch closely for any slight change in behavior that demonstrates your dog is feeling the static stimulation.

1. With the Collar Receiver turned on and properly fitted to your dog, set the Remote Transmitter's Intensity Dial at Level 1 and press the Continuous Static Stimulation Button for 1 to 2 seconds.
2. If your dog shows no reaction to Level 1, go to Level 2 and repeat the process.
3. **YOUR DOG SHOULD NOT VOCALIZE OR PANIC WHEN RECEIVING STATIC STIMULATION. IF THIS HAPPENS, THE STATIC STIMULATION LEVEL IS TOO HIGH AND YOU NEED TO GO BACK TO THE PREVIOUS LEVEL AND REPEAT THE PROCESS.**
4. Once you find your dog's Recognition Level, this is the level you should use when you begin a training exercise.
5. If you have progressed to the highest static stimulation level while searching for your dog's Recognition Level and your dog continues to show no response, check to see if the Collar Receiver is snug against your dog's neck. Then go back to Intensity Level 1 and repeat the process. If your dog still does not indicate he is feeling the static stimulation, you have two options: you may either have to trim the hair beneath the Contact Points, or switch to the longer Contact Points included in your system.

If after completing all of these steps your dog still does not indicate he is feeling the static stimulation, please contact the Customer Care Center at 1-800-732-0144.

CHANGING STATIC STIMULATION RANGES

Your SportDOG® Brand Collar Receiver comes with 2 static stimulation ranges (low and medium). There are 7 static stimulation levels within each range, with 1 being the lowest and 7 being the highest. The default range setting is 2.

To change the range of static stimulation, follow these steps:

1. Make sure the Collar Receiver is off.
2. Then turn the unit on by pressing and releasing the On/Off button.
3. After the Indicator Light turns off and within 5 seconds, press and hold the On/Off button for 3 seconds.
4. The Collar Receiver will then beep and the Indicator Light will flash orange as indicated by the chart below. Continue to hold the button until the number of beeps/orange flashes equals the desired stimulation range shown.
5. Release the button once the desired range is selected; the Collar Receiver will turn off.
6. Turn the unit back on. It will then beep according to the static stimulation range selected in Step 4.

BEEPS	STATIC STIMULATION RANGE	DOG TEMPERAMENT
1 beep	Low	Mild
2 beeps	Medium	Moderate

STEP::05

MATCH THE COLLAR RECEIVER AND REMOTE TRANSMITTER

To match the Collar Receiver to work with a new Remote Transmitter or to match a new Collar Receiver to work with your existing Remote Transmitter:

1. Turn off the Collar Receiver.
2. Press and hold the On/Off Button. The Receiver Indicator Light will come on, then turn off after 4-5 seconds. If the On/Off Button is released too early, the Receiver Indicator Light will begin flashing as normal. If this occurs, start over from Step 1.
3. After the Receiver Indicator Light has turned off, release the On/Off Button.
4. Press and hold the Upper Button on the Remote Transmitter until the Receiver Indicator Light flashes 5 times. Once the Receiver Indicator Light has flashed 5 times, the Collar Receiver has been matched and will begin flashing as normal. If the Receiver Indicator Light does not flash 5 times, start over from Step 1.

BASIC TRAINING

BEFORE TRAINING YOUR DOG WITH THIS PRODUCT

You will have the most success using this Remote Trainer if you always remember to teach a command before trying to reinforce the command with a Remote Trainer. We recommend that you read the following Basic Training instructions before training with this Remote Trainer. Your training will be easier and proceed faster if you follow the guidelines in this teaching assistant.

BASIC TRAINING WITH PRO TRAINER CHARLIE JURNEY

TRAINING YOUR DOG TO PERFORM OBEDIENCE COMMANDS ON A LEASH

It is mandatory that you control your dog's actions during every training session. Initially, controlling your dog during obedience training sessions is accomplished in two ways: 1) the leash and 2) the tone of your voice. While on the leash, your dog does not have an opportunity to escape through the instinctive mechanisms all canines possess. Bolting, biting, and quitting are no longer options. Your tone of voice will later take the place of the leash. Later the e-collar will replace both and you will be able to put the leash away until you train your next dog.

Your dog should always work for you because you are the most important relationship in its life, and pleasing you should be at the top of its priority list. The positive reward any dog appreciates most from a trainer is a thank you in the form of a loving shoulder stroke, affectionate eye contact, and a sincere "good dog." If your dog does not light up on any of those three, you need to reevaluate your relationship. Each command should be followed with a positive reward of some fashion when your dog follows your lead.

THE FIRST COMMAND: NO

The first command your dog will learn is "No." Usually your dog will understand this command by the end of its first day with you. Your dog hears this command each time it is doing something wrong and it comprehends the command by the way you say it. Your dog may have been running around the house with your wife's pantyhose in its mouth or chewing on your prized decoy when it hears that dreadful word. Intonation expresses your feelings to your dog in a language that is universal. The tone of your voice tells your dog that it is in trouble and through repetitive use, the word "No" comes to mean the same thing. Voila! Our first conditioned response! (Thank you, Dr. Pavlov).

"No" means stop what you are doing immediately. Put yourself in your dog's place when it hears this command and understands it. The dog is thinking it must quickly stop what it is doing. Your dog would gladly obey you, if it only knew what you desired. For this reason, when your dog does stop doing whatever it was that bothered you, you must give another command expressing what will please you. "No" is always followed with something that will make you happy. When you are happy, your dog will see it through your eyes, feel it by your touch, and hear it in your tone. And, that is your dog's positive reward. Even when it makes a mistake and is corrected by the word "No," it receives a reward by following your next command. This is a simple and foolproof method.

THE MOST IMPORTANT COMMAND: HERE

"Here" is the most important command your dog will ever learn. It is an escape from almost any trouble. "Here" tells your dog to come to you immediately and without deviation. This command is very easy for your dog to learn if you will speak its language. Most dogs will make a beeline to any person who kneels down and opens up their arms. In this position you are using postural language to welcome your dog. While you are kneeling and your dog is running to you, add the verbal command "Here." Shower your dog with positive verbal rewards while stroking its shoulder.

Let's take a second again and discuss how much positive reward to give a dog when it follows your commands. Do you remember how your dog communicates to you that it understands and accepts your actions? When your dog swallows, it says, "I understand." So, back off the positive rewards when your dog says it understands and accepts your thank you by swallowing. Continually stroking your dog's shoulder and praising it will eventually lessen the sincerity of your reward and that could be a huge mistake. Training your dog to come to you with the "Here" command is done along with the postural position of kneeling and opening up your arms.

The leash (or lead) should be used in training your dog on the command "Here" as soon as it is comfortable with the leash. Give the command "Here" and apply a slight tug on the leash. Be sure to release the leash pressure the instant the dog starts coming toward you. Many people try to maintain leash pressure until the dog is at their side. While this works, it can be too much pressure and your dog does not get the reward of turning the pressure off while it is coming to you. If your dog hesitates or fails to come directly to you, give another tug with the lead and repeat "Here." When your dog arrives at your side, stroke its shoulder until it gives you a swallow response. Your dog has learned what you want and now it is time to condition the response with repetition.

A POSITIONAL COMMAND: HEEL

"Heel" is a positional command that instructs your dog to assume a position beside your leg whether you are walking, standing, running, or riding a horse. People seek professional help in teaching their dog to heel properly more than for any other command. These folks always explain that their puppy is a great dog but it will not walk on its leash. This means the dog feels like it is alpha and should lead its owner where it pleases. Every dog will learn the proper heel position on its first day of training with proper leash usage. Place the leash in its proper position behind your dog's ears and begin walking forward. If your dog attempts to lead you by moving ahead, simply change direction. The leash will tighten around its neck and it will follow your new direction. It is imperative that no leash pressure be present when your dog's head is beside your knee. It will learn this position is safe and causes no discomfort through repetition. Add the verbal command "Heel" after the dog assumes the correct position and repeat "Heel" each time its head is beside your knee.

We have discussed how to correct your dog if it attempts to lead you, but what should you do if it tries to lag behind or flop around like a fish instead of following your lead? Keep moving forward and allow the leash to do its job. The important point is for you not to stop moving. If you stop walking to check on your dog or coax it forward, the leash will relax and its pressure will stop. Your dog must learn that the only way the pressure around its neck will disappear is by assuming the correct "Heel" position. With repetition, this position will become a comfort zone.

ANOTHER POSITIONAL COMMAND: SIT

The next command to teach is "Sit." With this command, you tell your dog to sit and remain seated until it receives another command. The leash applies pressure to the underside of the dog's neck when you are training it to sit. You are now working on a different pressure point. Pull straight up on the lead with your right hand and push down on your dog's butt with your left hand until its bottom hits the ground. Add a verbal "Sit" and release the pressure on the leash. Pressure from the leash can be omitted when your dog is consistently sitting on verbal commands. Later you will get into corrections and the steps you should follow to make things clear for your dog. Repeat the "Sit" drill until your dog is happily driving nails with its rear.

Have you ever seen a dog sit sideways? It flops down and comes to rest on one hip. This is a common occurrence for lazy dogs and needs to be corrected. Pull up on the leash until your dog sits in a proper fashion. It may become necessary to step forward if your dog will not align itself properly at first. Fight for the proper sit position now and you won't have to address this in the future when you are asking it to sit in the face of overwhelming distractions.

Now your dog has learned to come to you, walk comfortably beside you, and sit on command. It must concentrate and use its brain as it learns these skills. Pay close attention to your dog's focus, making sure that the training sessions are not too long. Even though your dog's brain is a sponge at this point, it can become oversaturated and unable to receive anymore constructive information.

A FOLLOW-UP TO "SIT": STAY

When you give your dog the "Sit" command, you've told it to sit and remain seated until it receives another command. Many obedience programs no longer use the "Stay" command, believing it is redundant and not necessary. However, it would be good for you to know how to condition for this

command if your dog struggles with remaining seated. To reinforce sitting, apply a light amount of upward leash pressure to its collar and command "Stay" as you start to move away and toward the end of the leash. Your dog will likely get up and try to move with you. If this occurs, stop it with "No," reseat the dog with "Sit," and repeat "Stay" with another upward tug on the leash. It should not take too many corrections before your dog figures this puzzle out. Should it continually refuse to stay, add increasing amounts of leash pressure and stronger "No" commands until it obeys. You may need to be more patient here than any other place. You have already conditioned your dog to move with you at heel as you move away and many dogs think this is what you want now instead of remaining seated. Correction for mistakes, rewards for positive responses, and repetition will quickly condition your dog to this command.

A DIRECTIONAL COMMAND: KENNEL

You will often require your dog to enter different areas and objects: airline crates, vehicles, buildings, boats, duck blinds, and fenced areas are just a few examples. You will use the command "Kennel" to tell your dog to enter what is in front of it. Always use the command "Sit" before you ask a dog to enter. If you give your dog a chance to sit and look into the area it is being asked to enter, it will be far more likely to perform this skill without a fight. By looking into this area, your dog can see that the boogie man is not waiting inside.

What should you do if your dog decides it does not want to enter? You know it will give to the pressure of a leash, so lead it into the proper area and command "Kennel." Once in the correct place, stroke pup on the shoulder until you see acceptance via the swallow response. Repeat this routine until you start to develop a conditioned response to your command. Some dogs fight this entry with a great deal of vigor. If your dog chooses this option, be sure to maintain leash pressure until you get the desired response. Once it understands that there is no danger in these areas, it will be glad to enter upon command.

Think about your individual training situation and see if you can create opportunities to work on the "Kennel" command. This can be accomplished by having an airline crate with you while doing your dog's obedience routine or working in an area close to the entrance of your home where the doorway becomes the area in which your dog is commanded to enter. Or, you could use your vehicle, and this will be very handy when you take your dog to other training areas.

A FINAL OBEDIENCE COMMAND: DOWN

The next command in your obedience program will be "Down," which tells your dog to lie down and remain in this position until it receives another command. This command is most often used around the home. For this reason, the easiest time to work on "Down" is at night while watching television. Command your dog to "Sit" and stroke its shoulder when it obeys. Face the dog, grab its front paws, and pull them toward you. When your dog's chest hits the floor, command "Down" and stroke a shoulder again. Most dogs will immediately rise, assuming a sit position. If this occurs, correct your dog with "No" and repeat the "Down" process again. It generally takes around three evenings before your dog will become comfortable with this routine. But, do not be worried if it takes your dog three weeks.

UNDERSTANDING CORRECTION

We have spoken very little about correcting your dog for making a mistake up until this time. No dog is perfect and many mistakes are going to occur while training. In reality you want your dog to make mistakes so you can clearly show the difference between right and wrong. It is important that you have a correction method that your dog understands and comfortably accepts. Here is the correction system you should use from Day One. The same correction system will be used for the rest of your dog's life whether you are using a leash or e-collar to correct improper responses.

1. **Give your dog a command.** If it obeys, use a positive reward. If it fails to obey, proceed to Step 2.
2. **Stop your dog's incorrect action with the command "No."** Repeat the command after you get the incorrect actions stopped. If your dog obeys, use a positive reward. If it fails to obey, proceed to Step 3.
3. **Stop your dog's incorrect action with the command "No" and use the physical pressure of your leash until the correct response occurs.** Immediately release the pressure when your dog obeys, repeat the command, and praise with a positive reward.

If you are consistent in this correction process, the verbal correction of "No" will become much more powerful. Your dog will learn through daily usage that if it does not follow your lead after the command "No," there will be some form of physical pressure (leash or electronic). Your dog does not like being corrected any more than you do. Correction will be a part of its life and it will accept this correction as long as you give it in a comfortable and systematic fashion. This means you must be consistent and you cannot hurt your dog by hitting, kicking, or overstimulating when you become frustrated.

APPLICATION OF THE ELECTRONIC COLLAR

E-collar use has come a long way. The equipment is better and the many available programs for training with e-collars are better. Some people don't believe e-collars are reliable enough and therefore they shouldn't be used, but successful results are dependent on the skills of the operator, not the product. It is very rare for a dog to not accept and happily work while on a leash, but you can hurt your dog's attitude if it is used improperly. It is the same with e-collars. You can do an unbelievable amount of damage to your dog's attitude by over correcting with an e-collar if you do not know what you are doing or if you don't control your actions. **This program will show you how to use an e-collar, but you must never lose control of your emotions.** So, make a promise to yourself and your dog that you will always remain focused and in control when training.

In the beginning, e-collars were simple metal boxes with an on/off switch and no way to adjust the static stimulation levels. And they were often unreliable. SportDOG Brand® remote training systems are an example of how advanced e-training products have become. SportDOG Brand offers several excellent models that work at great distances over land or in water.

THE RIGHT WAY TO BEGIN

Your dog needs to start wearing an e-collar as soon as it can comfortably support the collar's weight. The collar should be worn from that point forward during all training sessions. Initially, you should attach the collar and do something fun such as retrieving exercises with a bumper or ball.

Continue this until your pup's tail is wagging uncontrollably. Soon, your dog will be doing airplane spins each time it sees the collar and think, "Oh boy, we are getting ready to have some fun!" That is a pretty nice first impression. **This is an important first step in collar conditioning: your dog's acceptance of the e-collar in a fun fashion.**

You shouldn't be pressing any of the Remote Transmitter's buttons until your dog is 100 percent reliable on obedience drills. When you have to deliver a correction you do not want your dog trying to guess what you expect. Your dog should be performing these skills masterfully in the face of distractions. If you did your homework, your dog will have an excellent understanding of what you are asking while being able to process pressure at the same time. **Before, pressure was in the form of a leash. Now, it will be an electronic, brief correction from the collar.** Your dog already knows what to do in the face of pressure; you are simply changing the type of pressure. Previously the pressure of the leash was on your dog's neck and that is where the e-collar also applies pressure, but in a different form. The e-collar will now become an infinitely long leash to your dog. A brief correction with the collar will take the place of a tug on the lead. This sounds pretty simple doesn't it? Keep it that simple and you and your dog will be happy.

Always remember: You are not going to teach your dog anything with an e-collar. You are only adding electronic pressure to a skill your dog already knows and can routinely perform. Also, do not use the e-collar to correct responses in an area where your dog may have not performed these skills until the training process is finished.

FINDING THE CORRECT STATIC STIMULATION LEVEL

The hardest thing about using an e-collar is finding the proper level of static stimulation and sticking with it. Some folks are of the opinion that you should use continuous high-level static stimulation until the dog complies. Others think you should use low-level continuous static stimulation. Both programs can work and create a dog that performs great, but either of these methods could lead to trouble for a novice trainer.

Your long-term goal is to have your dog remain under total control while receiving correction from the e-collar and understand why the correction occurred. Remain under total control is the key phrase in that sentence. If your dog is jumping around or cannot focus on you because it is vocalizing, it is not under control. If your dog reacts in either of these ways, back off. Either you are progressing too fast or the static stimulation intensity is too high.

You should shop for the correct level of static stimulation by starting with the lowest intensity and continuing up until you see the acceptance mechanisms appear. This is first introduced during obedience drills. With your dog on-leash, call it to you. After a few successful "Here" routines, apply leash pressure and stimulate with the e-collar at the same time. Look for the swallow response, head drop, or neck twitch. Sometimes you can see a change in the breathing pattern. Progress up in intensity until you see your dog say, "I accept" with one of these responses. When you see your dog drop its head or swallow, you are there and this will be your most-often used correction level.

COLLAR CONDITIONING WITHIN EACH OBEDIENCE COMMAND

Never correct your dog with the e-collar without first conditioning it to accept and understand the collar. This will take a short period of time, but without the conditioning process, your dog will be dazed and confused about the discomfort around its neck. It is easy to confuse your dog and undo a couple of months of good training in just a few minutes by over-stimulating on a correction or correcting when it is not justified. No corrections should occur until the conditioning process has been successfully completed. The collar-conditioning process can be thought of as practice in accepting electronic static stimulation. Your football coach didn't send you on the field without practicing the plays and likewise, we do not want to send your dog into the world without an understanding of how to comfortably accept electronic correction.

USING AN E-COLLAR TO REINFORCE OBEDIENCE COMMANDS

"HERE"

Bolting can become a disastrous side-effect of e-collar conditioning if your dog is allowed to move away from your control. Therefore, keep using the leash until the conditioning process is finished. Toss a few bumpers and work on obedience drills in the training area. Check for that wagging tail which signals a good attitude. Then command "Here," deliver a brief correction on the correct level – paying close attention to the dog's reaction – and then immediately command "Here" again. Reward your dog with a stroke on the shoulder and verbal praise. Repeat "Here"-brief correction-"Here" three to five times on the first day at various places in the work area while making sure that no two brief corrections occur at the same spot. Your dog will receive at least three brief corrections, but no more than five, during the first couple of sessions. If things are going well, you can go to five. But, if your dog is nervous, stop at three. Continue the obedience routine with no static stimulation for a little longer. Make sure rewards follow proper responses. Finish by throwing a bumper or ball to each spot where your dog received static stimulation in an effort to show that the location had nothing to do with why the correction occurred.

Pay close attention to your dog's attitude during this routine. If momentum fades, use fewer brief corrections and more play time. Increase the reward by adding a few extra shoulder strokes along with a happy tone of voice. Don't be afraid to skip a day if your dog shows repeated signs of too much pressure. This is not likely to occur if you are careful, but understand how to overcome it just in case.

"SIT"

Next, it is time to condition your dog to sit and accept a correction while maintaining control in the seated position. Have your dog do a quick obedience drill and command "Sit." While the dog is seated, give a brief correction with the collar and immediately command "Sit" again. If it moves around or gets up, return the dog to the seated position by using the leash. Reward on the shoulder and verbally. Repeat the "Sit"-brief correction-"Sit" three to five times per session. As before, move around so you do not stimulate your dog at any spot more than once. Use a positive reward after each successful brief correction.

"STAY"

When your dog is comfortably accepting e-collar pressure while remaining seated, you can start to use the e-collar for correction on the "Stay" command. After successfully seating your dog, command "Stay," deliver a brief correction and command "Stay" again. Watch for the acceptance response and do not move ahead until you get it. Call your dog to you and repeat the process several times without e-collar stimulation. Repeat the "Stay"-brief correction-"Stay" at other locations and repeat this process until your dog is the picture of perfection, remaining seated even when distractions tempt it to get up and move.

"HEEL"

Your dog learned to heel beside you earlier in the program, and transferring this command to e-collar correction is simple. Walk your dog on-leash and change directions. As the leash tightens, command "Heel," give a brief correction with the collar and command "Heel" again. It is important to apply the brief correction at the same time the leash is tight instead of when the dog is coming to you. Reward with verbal praise and a stroke on the shoulder until you see the acceptance swallow. Repeat this routine as you walk together in various locations until your dog is comfortable.

Your dog is now conditioned to accept the e-collar while coming, heeling, or sitting on command. It is time to mix the commands into a full "Here"- "Heel"- "Sit" drill. Use your brief correction at varying times as your dog allows and as before, avoid successive brief corrections or multiple brief corrections in the same area. You can increase the number of brief corrections as long as you pay close attention to your dog's attitude. Toss a few bumpers to chase when necessary to relieve pressure and pour on the positive rewards as needed.

"DOWN"

Your dog understands the "Down" command and can perform it without any trouble by now if you did your homework. Now you can easily add the e-collar to this routine in the same fashion as before. Place your dog in the "Down" position with a verbal command. Command "Down" again, give a brief correction with the e-collar and repeat "Down." Watch how your dog reacts, looking for the acceptance signals. Praise with a stroke on the shoulder and verbally. As before, you need to condition this with repetition.

KEEP THAT COLLAR ON!

At some time, you will get to a point where you feel like your dog no longer needs to wear the e-collar because it never makes a mistake. Congratulations on a job well done! However, your dog should always wear the e-collar when in environments that contain distractions. Would you drive your car across the country without automobile liability insurance? You should now think of the e-collar as your insurance policy in case you and your dog get into a wreck. It gives your dog a way out of trouble in an orderly fashion that it understands even when its instincts are telling it to do something else. What does it hurt for your dog to wear the e-collar when you go to the park, Grandma comes for a visit, it is time to go to the vet, or a million other unknown distractions? You taught that the e-collar means the two of you are getting ready to do something fun, so keep the e-collar on.

ENJOY THE TRIP

You have now learned how to start down the road to a life of enjoyment with your dog. Some of these steps may need to be covered again if your dog has repeated failures. That is no problem as long as you take it easy and enjoy the ride together. Arriving is one of our goals but the trip that takes you there will be filled with memorable times that will cement you and your dog's relationship forever.

GOOD TRAINING!

Charlie Journey of Terrell, North Carolina, is a professional retriever trainer and owner of Beaverdam Kennels, producer of Grand Master Hunting Retrievers and Master Hunting Retrievers. Most recently, Charlie authored the *Finished Dog* retriever training book.

FREQUENTLY ASKED QUESTIONS

Is the static stimulation safe for my dog?	While Continuous or Momentary static stimulation may be unpleasant, it is harmless to your dog. Electronic training devices require interaction and training from the owner to achieve desired results.
How old does a dog have to be before using this remote trainer?	Age is not as important as your dog's developmental ability to learn. Your dog should be able to learn basic obedience commands such as "Sit" or "Stay." The Collar Receiver may be too large for dogs under 8 pounds.
Once my dog is trained and has been obeying my commands, will my dog have to continue to wear the Collar Receiver?	Your dog may need to wear the Collar Receiver from time to time for reinforcement. Also, many hunters keep the Collar Receiver on their dogs while hunting for maximum control because they possess a high drive and experience many distractions while in the field.
Is the Collar Receiver waterproof?	Yes. If the rechargeable battery pack ever needs to be replaced, make sure the o-ring and o-ring groove are free from dirt and debris.
Can my Collar Receiver be used around salt water?	If the Collar Receiver is used in or around salt water, the Collar Receiver should be rinsed with fresh water following each use.
Can I use this remote trainer with more than one dog?	No, this remote trainer is only a one-dog system.
Can I use this remote trainer on aggressive dogs?	We do not recommend any of our products to be used on aggressive dogs. We recommend you contact your local veterinarian or professional trainer if you believe your dog might be aggressive.
Will I get the exact range claimed with this remote trainer?	The range you get with your remote trainer will vary according to terrain, weather, vegetation, as well as transmission from other radio devices. To get the maximum amount of range, please refer to "How the System Works" section of this guide.
How long can I continuously deliver static stimulation to my dog?	The maximum amount of time you can press the Continuous Static Stimulation Button and deliver static stimulation to your dog continuously is 10 seconds. After 10 seconds, the Remote Transmitter will "time-out," and the Continuous Static Stimulation Button must be released and pressed again.

FREQUENTLY ASKED QUESTIONS

What do I do if my dog's neck becomes red and irritated?	This condition is due to the Contact Points irritating the skin. Discontinue use of the Collar Receiver for a few days. If the condition persists beyond 48 hours, see your veterinarian. Once the skin returns to normal, resume use, and monitor the skin condition closely. Avoid leaving the collar on your dog for more than 12 hours per day.
The Intensity Dial seems difficult to rotate. Is this normal?	Yes. This prevents accidental changes in intensity and encourages an optimal waterproof seal. The knob will "break in" and be slightly easier to turn as you use it.
Can I attach a leash to this remote trainer?	DO NOT attach a leash to your remote trainer. You may put a separate non-metallic collar on your dog's neck and attach a leash. Be sure the extra collar does not interfere with the Contact Points.

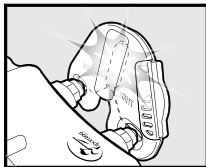
TROUBLESHOOTING

The answers to these questions should help you solve any problem you have with this system. If they do not, please contact the Customer Care Center at 1-800-732-0144 or visit our website at www.sportdog.com.

My dog is not responding when I press a button.	<ul style="list-style-type: none"> • Check to see if the Collar Receiver has been turned on and the Indicator Light is flashing. • If your range has reduced from the first time you have used it, please check to see if the battery is low in either the Remote Transmitter or Collar Receiver. • Many factors can impact the range you have with your system. For a list of these factors, please refer to "How the System Works". • You can verify the Collar Receiver is delivering static stimulation to your dog by placing the test light, enclosed in your kit, on the Collar Receiver. Please refer to the "Test Light Instructions" section for details. • Increase the Intensity Dial. Refer to "Find the Best Intensity Level for Your Dog" for more information. • Increase the Static Stimulation Range. Refer to "Changing Static Stimulation Ranges" for more information. • Make sure the Collar Receiver's Contact Points are placed snugly against your dog's skin. Refer to "Fit the Collar Receiver" for more information. • You may need to switch to the longer Contact Points included with your system or trim the hair beneath the Contact Points. Never shave the dog's neck. • If you notice your operating time dropping to about half the original time, your Collar Receiver battery needs to be replaced. Contact the Customer Care Center to purchase a new one.
The Collar Receiver will not turn on.	<ul style="list-style-type: none"> • Make sure the Collar Receiver has been charged. The Collar Receiver will charge in 2 hours.
The Collar Receiver is not responding to the Remote Transmitter.	<ul style="list-style-type: none"> • Make sure the Remote Transmitter has been charged. The Remote Transmitter will charge in 2 hours. • Verify the Collar Receiver has been turned on and the Indicator Light is flashing. Refer to "Turning the Collar Receiver On and Off." • Refer to "Match the Collar Receiver and Remote Transmitter."

TEST LIGHT INSTRUCTIONS

1. Turn on the Collar Receiver.
2. Hold the Test Light Contacts to the Contact Points.
3. Press the Upper Button on the Remote Transmitter.
4. The Test Light will flash.
NOTE: At higher static stimulation levels, the Test Light will flash brighter.
5. Turn off the Collar Receiver.



Save the Test Light for future testing.

NOTE: If the Test Light does not flash, recharge the battery and retest. If the Test Light still does not flash, contact the Customer Care Center at 1-800-732-0144.

FCC: USA

This device complies with part 15 of the FCC Rules. Operation is subject to the following two conditions: (1) This device may not cause harmful interference, and (2) this device must accept any interference received, including interference that may cause undesired operation.

NOTE: This equipment has been tested and found to comply with the limits for a Class B digital device, pursuant to part 15 of the FCC Rules. These limits are designed to provide reasonable protection against harmful interference in a residential installation. This equipment generates, uses, and can radiate radio frequency energy and, if not installed and used in accordance with the instructions, may cause harmful interference to radio communications. However, there is no guarantee that interference will not occur in a specific installation. If interference does occur to radio or television reception, which can be determined by turning the equipment off and on, the user is encouraged to try to correct the interference by one or more of the following measures:

- Reorient or relocate the receiving antenna.
- Increase the separation between the equipment and the receiver.
- Connect the equipment to an outlet on a circuit different from that to which the receiver is connected.
- Consult Customer Care, the dealer, or an experienced radio/TV technician for help.

CAUTION: Modification or changes to this equipment not expressly approved by Radio Systems Corporation® may void the user's authority to operate the equipment.

IC - CANADA

This device complies with Industry Canada licence-exempt RSS standard(s). Operation is subject to the following two conditions: (1) this device may not cause interference, and (2) this device must accept any interference, including interference that may cause undesired operation of the device.

Le présent appareil est conforme aux CNR d'Industrie Canada applicables aux appareils radio exempts de licence. L'exploitation est autorisée aux deux conditions suivantes : (1) l'appareil ne doit pas produire de brouillage, et (2) l'utilisateur de l'appareil doit accepter tout brouillage radioélectrique subi, même si le brouillage est susceptible d'en compromettre le fonctionnement.

Customer Care Center / Service clientèle

800-732-0144

Monday - Friday / Lundi - Vendredi

8 am - 8 pm EST / 8h00 - 20h00 EST

Saturday / Samedi

9 am - 5 pm EST / 9h00 - 17h00 EST

BATTERY

This system operates on two Li-Ion battery packs. Only replace with battery received from calling the Customer Care Center at 1-800-732-0144.

- Batteries should never be removed from the battery compartment for charging.
- The rechargeable Lithium Ion (Li-Ion) batteries are not memory sensitive, do not require depletion before charging, and cannot be over charged.
- The batteries come partially charged from the factory, but will require a full charge before the first use.
- **When storing the unit for long periods, remember to regularly give batteries a full charge. This should be done once every 3 to 4 months.**
- You should expect hundreds of recharge cycles from your batteries. However, all rechargeable batteries lose capacity over time relative to the number of recharge cycles they experience. This is normal. If your operating time drops to half of the original life, contact the Customer Care Center to purchase a new battery.
- The batteries should last for a period of 3-5 years. When a battery needs replacement, you can order a new pack by calling our Customer Care Center at 1-800-732-0144. Please do not open the Collar Receiver or Remote Transmitter until you have received the replacement.

AT END OF PRODUCT LIFE, USE THESE BATTERY REMOVAL INSTRUCTIONS FOR FINAL DISPOSAL (DO NOT OPEN THE COLLAR RECEIVER OR REMOTE TRANSMITTER UNTIL YOU HAVE RECEIVED THE REPLACEMENT):

- Using a #1 Phillips screwdriver for your Remote Transmitter and/or a 3/32 Hex Key for your Collar Receiver, remove the case screws.
- Remove the case back or cover.
- Remove the old battery pack.

These instructions are not valid for repair or battery replacement. To avoid invalidating your warranty, please call the Customer Care Center at 1-800-732-0144 for help in replacing your battery with one that is specifically approved by Radio Systems Corporation®.



**GEAR THE WAY
YOU'D DESIGN IT®**



**GEAR THE WAY
YOU'D DESIGN IT[®]**

SPORTDOG.COM

©2020 RADIO SYSTEMS CORPORATION
Radio Systems Corporation • 10427 PetSafe Way • Knoxville, TN 37932 • 1.800.732.0144
J400-2469